

NO.	Marshall County	FG-PGA	FT-FTA	RE	P	TP	A
22	Rona Poe	8-15	2-2	5	5	18	1
24	Maggie Yopp	0-0	0-0	1	0	0	2
41	Carol Parker	12-20	6-8	9	2	30	0
20	Penny Barrett	1-5	2-4	1	3	4	4
15	Staci Dick	0-1	2-2	1	1	2	3
42	Mary Taylor	0-4	0-0	4	2	0	1
	-	-	-				
	-	-	-				
	-	-	-				
	-	-	-				
	-	-	-				
	-	-	-				
	-	-	-	1	DB		
TOTALS		21-45	12-16	22	13	54	11

NO.	Oldham County	FG-PGA	FT-FTA	RE	P	TP	A
10	Leslie Texas	1-7	0-0	2	1	2	5
11	Toni Henley	3-6	2-2	3	0	8	2
31	Patty Harned	2-3	0-0	3	5	4	0
42	Holly Davis	5-10	7-8	10	2	17	1
4	Julie Lewis	6-13	0-0	4	4	12	1
20	Cindy Chestham	0-0	0-0	1	2	0	2
44	Teri Hartlage	0-0	3-4	2	2	3	0
23	Julio Chestham	0-0	0-0	0	0	0	0
25	Danielle Dumpter	0-0	0-0	0	0	0	0
22	Susan Dierking	0-0	0-0	0	0	0	0
	-	-	-				
	-	-	-				
	-	-	-				
	-	-	-				
TOTALS		17-39	12-14	25	16	46	11

PERCENTS: **46.7** **75.0** **2** TEAM REBOUNDS (NOT IN TOTAL)

PERCENTS: **43.6** **85.7** **3** TEAM REBOUNDS (NOT IN TOTAL)

SCORE BY HALVES: **8-13-12-21=54**

Oldham County: **8-8-15-15=46**

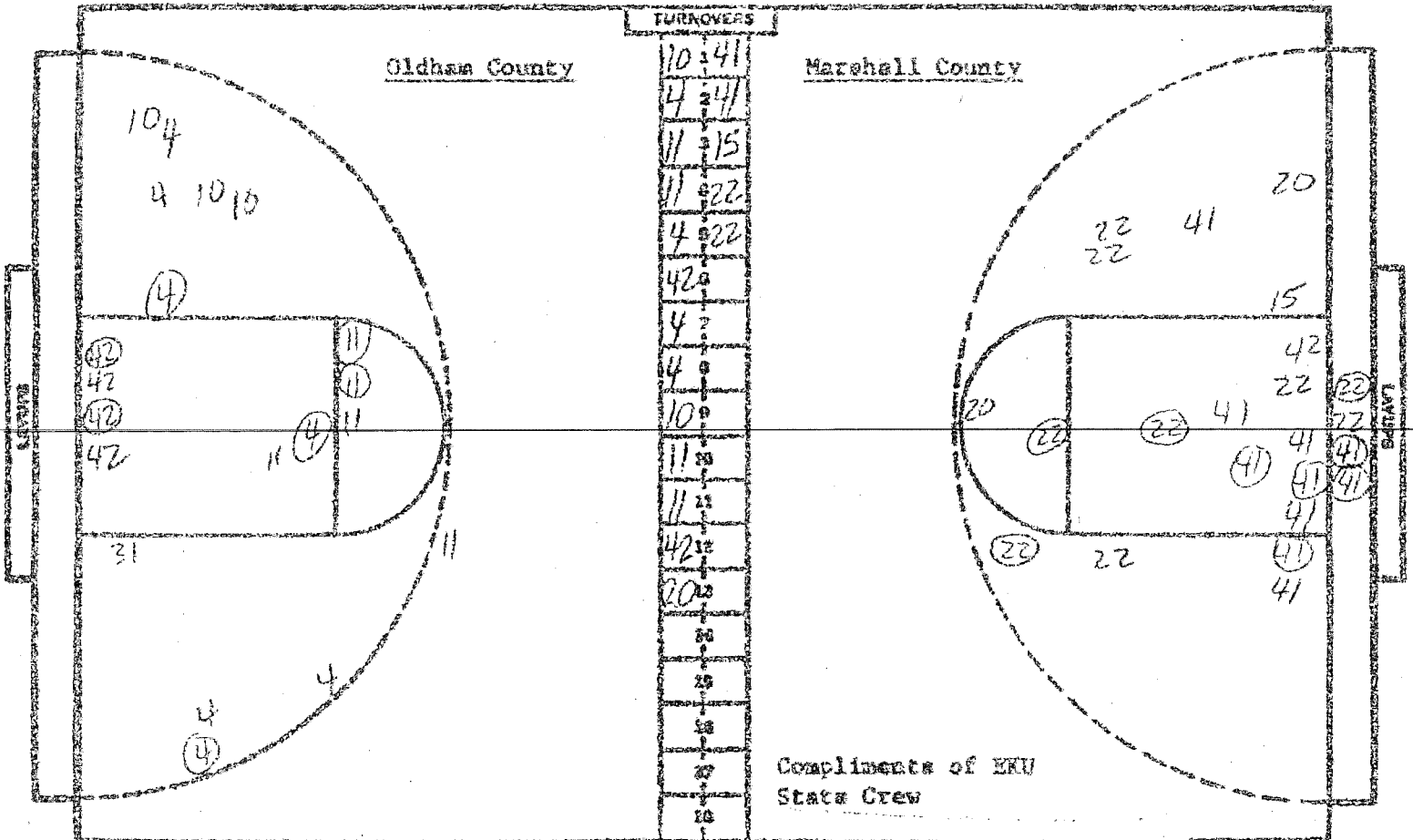
OFFICIALS: Jackie Cupp + Ernie Liggett

5600 EST. Attendance

Quarter Final Round - Girls' State High School Tournament
 March, 23, 1984 - Alumni Coliseum - Richmond, Ky
 Oldham County vs. Marshall County
 Officials - Jackie Cupp and Ernie Liggett

		<u>First Quarter</u>			
<u>Time</u>	<u>Oldham County play</u>	<u>SCORE</u>	<u>Marshall Co. play</u>	<u>Time</u>	
8:00	Texas, Henley, Harned, Davis Levis	Starters	Poe, Yopp, Parker, Barrett, Dick		
7:48	Harned takes the long pass from Texas lays it in	2-0			
		2-2	Parker 5 ft. turnecourund from Dick	7:32	
		2-4	Poe with a 7 ft. jumper	6:58	
8:41	Levis 20 ft. jumper left side(Henley)	4-4			
			foul on Poe PIT1	5:20	
4:37	foul on Texas PIT1				
3:47	Levis from free throw line	6-4			
		6-6	Parker turns around and puts it in (Poe)	3:18	
		6-8	Marshall time-out (1)	3:00	
			Poe drives center of lane hits the jumper	2:19	
1:46	Levis takes the long board and moves in for 5 ft. jumper	8-8			
		<u>Second Quarter</u>			
		8-10	Parker spins in the lane lays it in	7:08	
			Marshall's press forces the turnover that leads to Poe's spinning bank shot	6:46	
6:41	Oldham time-out (1)	8-12	Poe turns and hits from free throw line(Barrett)	6:23	
		8-14	Parker ft-ft		
5:58	foul on Levis PIT2	8-15			
5:42	Henley hits from 16 ft. mark	10-15			
5:20	foul on Levis P2T3				
			foul on Parker PIT2	5:16	
			foul on Barrett PIT3	4:51	
			foul on Taylor PIT4		
4:35	Davis retrieves own rebound and puts it in ft	13-15			
4:02	Henley from free throw line(Texas)	15-15			
2:57	foul on Harned PIT4	15-17	Poe ft-ft		
			Marshall time-out (2)	2:57	
2:57	Oldham time-out (2)				
	Davis ft-ft	16-17	foul on Barrett P2T5 BONUS	2:08	
1:36	foul on Davis PIT5(player control)				
		16-19	Parker takes Yopp pass, spins and hits from 5 ft.	1:25	
:38	foul on Harned P2 B	16-21	Parker ft-ft		
			Barrett drives down and dishes off into Parker for a layup	:09	
	Oldham Co.	16			
	Marshall Co.	21			

Ties - 5
 Lead changes - 3



Compliments of ERU
State Crew

NO.	Oldham County	FG-FGA	FT-FTA	RE	P	TP	A
10	Leslie Texas	0-3	0-0	2	1	0	2
11	Joni Henley	2-5	0-0	3	0	4	1
31	Patty Harned	0-1	0-0	3	2	0	0
42	Holly Davis	2-4	2-3	5	1	6	0
4	Julie Lewis	3-7	0-0	2	2	6	0
20	Cindy Cheatham	0-0	0-0	0	0	0	1
TOTALS		17-20	2-3	15	6	16	4

PERCENTS 35.0 66.7 2 TEAM REBOUNDS (NOT IN TOTALS)

NO.	Marshall County	FG-FGA	FT-FTA	RE	P	TP	A
22	Rona Poe	4-9	2-2	5	1	10	1
24	Maggie Yopp	0-0	0-0	0	0	0	1
41	Carol Parker	5-10	1-3	4	1	11	0
20	Penny Barrett	0-2	0-0	1	2	0	2
15	Staci Dick	0-1	0-0	0	0	0	2
42	Mary Taylor	0-1	0-0	1	1	0	0
TOTALS		9-23	3-5	12	5	21	6

PERCENTS 39.1 60.0 1 DB TEAM REBOUNDS (NOT IN TOTALS)

SCORE BY HALVES

8-8=16

8-13=21

OFFICIALS: Jackie Cupp & Ernie Liggett

5600 EST. Attendance

Quarter Final Round - Girls' State High School Tournament
 March 24, 1966 - Alumni Coliseum - Richmond, Ky
 Oldham County vs. Marshall County
 Attendance - 5600 out/

Time	Oldham play	Third Quarter		Marshall play	Time
		Oldham	Marshall		
		16-21			
		16-23		Poe takes ball after jump and	7:51
7:34	David with a layup (Hansley)	18-23		lays it in	
8:51	foul on Harned P111				
		18-25		Poe 17 ft. jumper (Barrett)	8:10
				foul on Poe P112	8:41
5:16	Lewis feeds Harned for turn around	20-25			
	inside				
		20-27		Parker 8 ft. turn around off	4:41
				left baseline (Dick)	
		20-27		foul on Dick P112	4:31
3:53	Davis fights for the rebound	22-27		foul on Taylor P113	
	and scores it				
		23-29		Poe 6 ft. jumper off of	3:56
				right baseline	
3:02	Lewis 15 ft. jumper off of left	25-29			
	side (Davis)				
2:21	Harned takes it inside for the	27-29			
	easy score				
2:02	foul on Harned P112				
2:02	Oldham time-out (1)				
1:53	foul on Hartlage P113				
		27-31		Parker off the baseline move	1:43
	Hartlage ft-ft	29-31		foul on Parker P114	1:29
1:13	foul on Lewis P114				
	Davis ft-ft	31-31		foul on Parker P115 P115	1:00
		31-33		Parker from mid. of lane (Barrett)	1:15
		31-35		Parker takes over when and lays it in	7:21
7:06	Lewis with 18 ft. (Kenne)	33-35			
6:22	Davis turns inside scores both				
	ends pass	35-35			
5:03	foul on Hartlage P115 P115	35-37		Parker ft-ft	
5:18	Hansley from free throw line (Kenne)	37-37			
		37-39		Parker banks the rebound in	5:00
4:28	Oldham time-out (2)	37-41		Poe steals it in for easy 2	4:43
4:12	foul on Harned P1 B	37-43		Parker ft-ft	
	Hansley ft-ft	39-43		foul on Poe P1 B	4:07
				Barrett takes it all the way again	3:52
		39-45		press to score (let points other than	
	Hartlage ft-ft	40-45		foul on Poe P1 B Poe/Parker)	3:43
				Marshall time-out (1)	3:15
2:43	Lewis 17 ft. left side	42-45			
	Davis ft-ft	44-45		foul on Poe P1 B	1:42
	foul on Lewis P1 B			Parker takes move to baseline and	1:20
		44-48		banks it in it	
1:04	Texas from left corner (C. Cheatham)	46-48			
:50	foul on C. Cheatham P1 B	46-50		Dick ft-ft	
:46	foul on Lewis P1 B	48-51		Barrett ft-ft	
				Marshall time-out (2)	1:28

Fourth Quarter cont.

<u>Time</u>	<u>Oldham play</u>	<u>SCORE</u>	<u>Marshall play</u>	<u>Time</u>
:12	foul on C. Cheatham P2 B	46-52	Barrett ft+fta	
		46-54	Parker takes the rebound and puts it in	:06
		Oldham County (25-6) 46		
		Marshall County (32-0) 54		

Time - 8

Lead changes - 3